

College Navigator

Tara Lawley

Federal Committee on
Statistical Methodology
Conference

National Center for
Education Statistics
(NCES)

October 23, 2024

Integrated Postsecondary Education Data System (IPEDS) Data Tools

Your primary source for
information on U.S.
colleges, universities,
and technical and
vocational institutions.



About the IPEDS Data Tools

Search tables and publications

Data Explorer

Publications and Products

Learn about an institution

College Navigator

Data Feedback Report

Create custom data analyses

Custom Data Feedback Report

Data Trends

Group Statistics

Summary Tables

Download data

Access database

Compare institutions

Complete data files

Custom data files

IPEDS Data Tools Resources

Tutorials
and
Workshops

Data User
Help Desk

IPEDS
Help Pages

IPEDS
Knowledge
Exchange

NCES Data
Institute

This Week
In IPEDS
(TWII)

IPEDS resource pages/brochures and NCES blog posts

Resource Pages/Brochures

IPEDS Integrated Postsecondary Education Data System

Home > Use The Data > Institutional Groupings in IPEDS

Institutional Groupings in IPEDS: Considerations for Data Use and Analysis

The Integrated Postsecondary Education Data System (IPEDS) represents the universe of U.S. postsecondary institutions eligible to participate in any of the Title IV federal student financial assistance programs, which included more than 6,000 institutions in 2022-23. In practice, however, data users are often interested in exploring only a subset of the broader universe of institutions.

For example, an academic researcher or policy analyst may be interested in “community colleges” in a particular state or “flagships universities” in all states. Similarly, an institutional research analyst may be most interested in comparing a small number of “peer institutions” for benchmarking purposes.

IPEDS data products—like web-based data tools and data files—include variables that may be useful for grouping institutions by selected characteristics. Data users may also identify their own institutional group of interest using sources or lists outside of IPEDS. This resource page provides an overview of how to understand, identify, and create institutional groupings within IPEDS data products.

Institutional Grouping Variables Available in IPEDS Data Products

Data users may find it useful to filter the IPEDS universe into smaller institutional groupings that are more meaningful for analysis and comparison. The following table presents common institutional grouping variables included in IPEDS data tools and files.

Common Institutional Grouping Variables Available in IPEDS

Survey Component	Variable ¹	Description
Institutional Characteristics Header (IC-H)	Control	Whether an institution is operated by publicly elected or appointed officials (public control) or by privately elected or appointed officials and derives its major source of funds from private sources (private control). Institutions under private control are further classified as either nonprofit or for-profit.

NCES Blog

NCES Blog

National Center for Education Statistics

← Celebrating the ECLS-K:2024: Providing Key National Data on Our Country's Youngest Learners | Measuring Student Safety: New Data on Bullying Rates at School →

Using IPEDS Data: Available Tools and Considerations for Use

March 6, 2024 | NCES Blog Editor | FAQs, General

The Integrated Postsecondary Education Data System (IPEDS) contains comprehensive data on postsecondary institutions. IPEDS gathers information from every college, university, and technical and vocational institution that participates in federal student financial aid programs. The Higher Education Act of 1965, as amended, requires institutions that participate in federal student aid programs to report data on enrollments, program completions, graduation rates, faculty and staff, finances, institutional prices, and student financial aid.

These data are made available to the public in a variety of ways via the IPEDS [Use the Data](#) webpage. This blog post provides a description of available IPEDS data tools as well as considerations for determining the appropriate tool to use.

Available Data Tools

IPEDS provides data tools for a variety of users that are organized into three general categories: (1) Search Existing Data, (2) Create Custom Data Analyses, and (3) Download IPEDS Data.

Search Existing Data

Users can search for aggregate tables, charts, publications, or other products related to postsecondary education using the [Data Explorer](#) or access IPEDS data via [NCES publications](#) like the *Digest of Education Statistics* or the *Condition of Education*.

Create Custom Data Analyses

Several data tools allow users to create their own custom analyses with frequently used and

College Navigator

[College Navigator](#) is a free consumer information tool designed to help students, parents, high school counselors, and others access information about postsecondary institutions.

Note that this tool can be found on the [Find Your College](#) webpage (under "Search for College"), along with various other resources to help users plan for college.

IPEDS data tools and functionality

	Data Selection							Data Extraction				
	Quick access ¹	Data release ²	Select institutions	Multiple years	Access raw data	Institution-level data	All data available	Save/upload institutions	Save/upload variables	Export data	Produce visuals	Toggle between tools ³
College Navigator	✓		✓		✓	✓				✓	✓	
Data Explorer	✓			✓						✓		
Publications & Products	✓			✓						✓		
Data Feedback Report												
Data Feedback Report	✓							✓			✓	
Custom Data Feedback Report			✓					✓			✓	
Statistical Analysis Report			✓		✓	✓		✓		✓	✓	
Data Trends	✓		✓	✓						✓	✓	
Look up an Institution												
Institution Profile	✓			✓	✓	✓					✓	
Reported Data	✓		✓	✓	✓	✓	✓					
Statistical Tables			✓	✓			✓	✓	✓	50	✓	✓
Summary Tables	✓		✓	✓		✓		✓		✓	✓	✓
Compare Institutions			✓	✓	✓	✓	✓	✓	✓	250		✓
Custom Data Files			✓	✓	✓	✓	✓			✓		✓
Complete Data Files	✓				✓	✓	✓			✓		
Access Database	✓				✓	✓	✓			✓		

¹ Provides data in fewer than 3 steps.
² = Provisional Release only for most current year = Final Release = Provisional Release only for most current year (replaced by Final data once they become available)
³ Users keep institution and variable selections when switching between tools

College Navigator

Name of School

States (use map for more than 1 state)

ZIP Code
Miles from

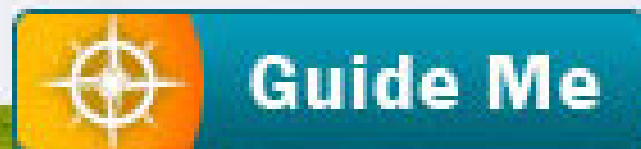
Programs/Majors
 0 Items Selected

Level of Award Certificate Associate's
 Bachelor's Advanced

Institution Type Public 4-year
 Private non-profit 2-year
 Private for-profit < 2-year

| [Clear Search](#)

Find the right college for you



- » Refine your search with *More Search Options* to select additional search criteria.
- » Build a list of schools using *My Favorites* for side-by-side comparisons.
- » Pinpoint school locations with an *interactive map*.
- » Export search results into a *spreadsheet*.
- » Save your session including search options and favorites.
- » [Add College Navigator](#) to your *browser search bar*.

[College Affordability and Transparency Center](#)



Browse lists of institutions with the highest and lowest tuition & fees and net price, and lists of institutions not meeting the 90/10 revenue requirement. [» GO](#)

ADDITIONAL RESOURCES

Preparing for your Education

Find out what you need to do to prepare for education beyond high school. [» GO](#)

Financial Aid

Apply for Federal Student Aid on FAFSA. [» GO](#)

Postsecondary Education Outcome Measures: ED, DOD, and VA

ED, DOD, and VA have identified a set of potential education outcome measures for Veterans and service members. [» GO](#)

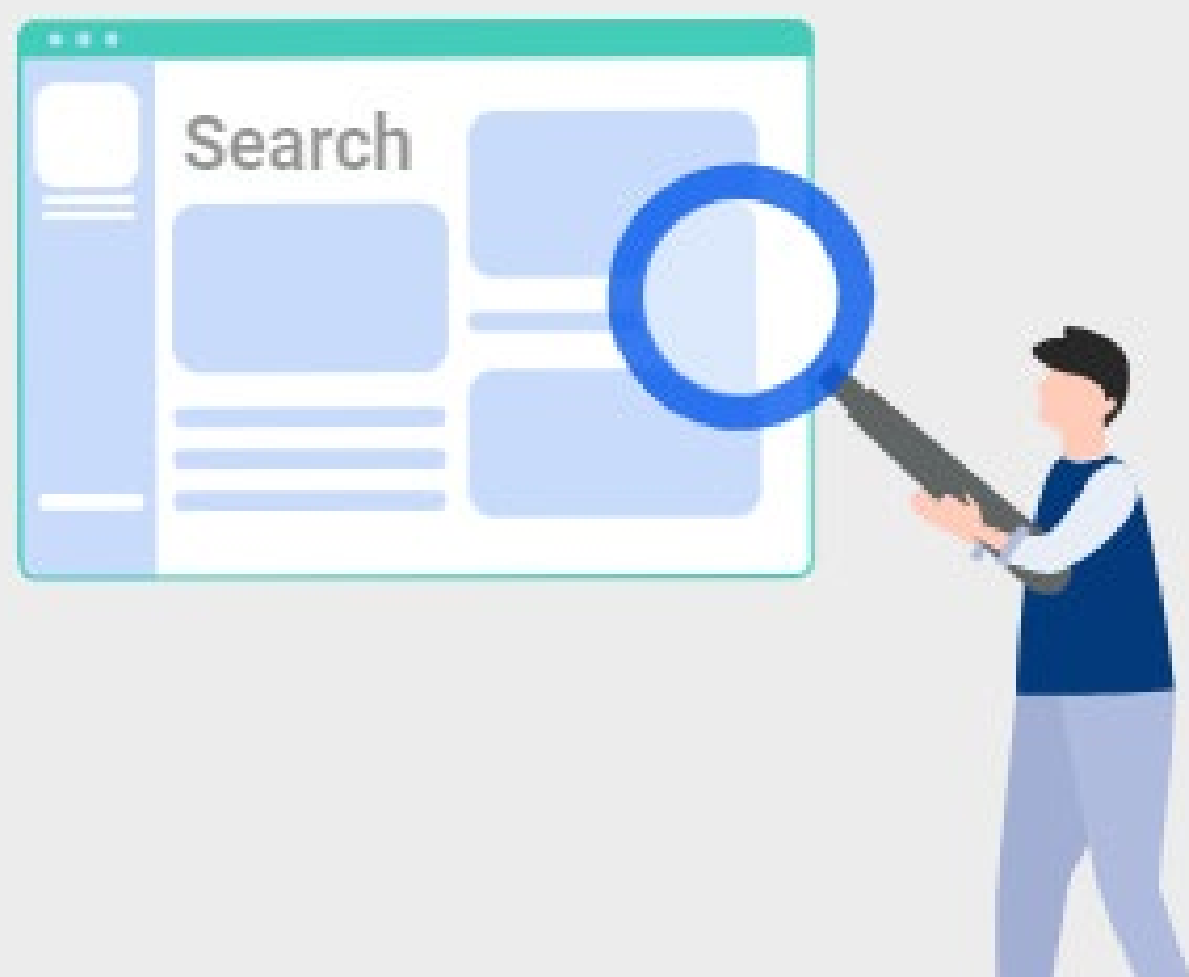
Careers

Deciding on a career? Consult the *bls.gov* Occupational Outlook Handbook. [» GO](#)

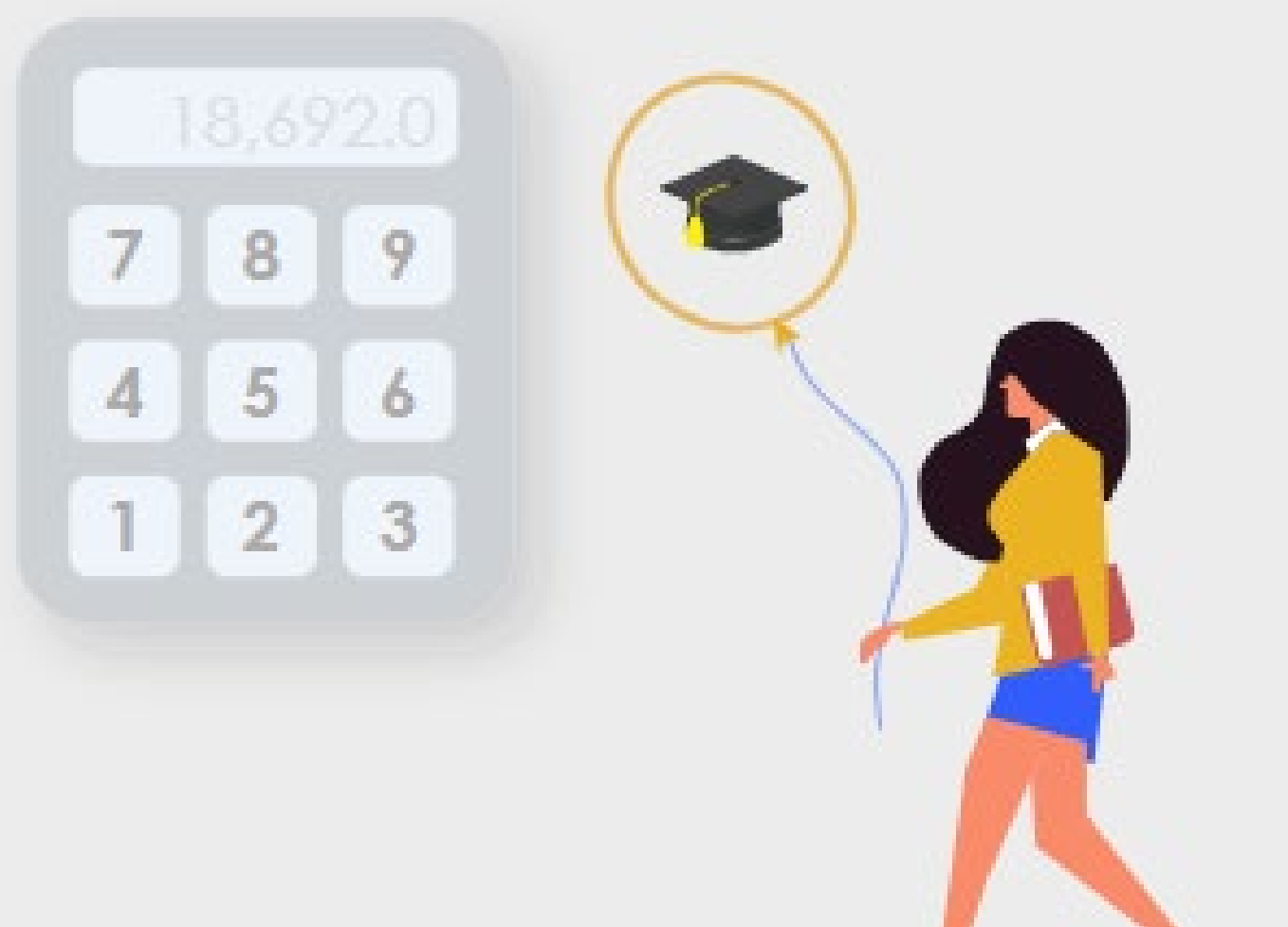
Development and Goals

- College Navigator replaced the College Opportunities Online Locator (COOL) in 2007. It is the U.S. Department of Education's primary source for comparing postsecondary institutions that participate in federal student financial aid programs.
- The purpose of Navigator is to:
 - Inform students and families about college options
 - Provide consumer disclosures in simple and understandable terms
 - Ensure that information is up-to-date, useful, and relevant
- In 2008, the Higher Education Opportunity Act (HEOA) detailed several new data requirements to be included on the College Navigator website. Most of the data included on the site are collected through IPEDS.

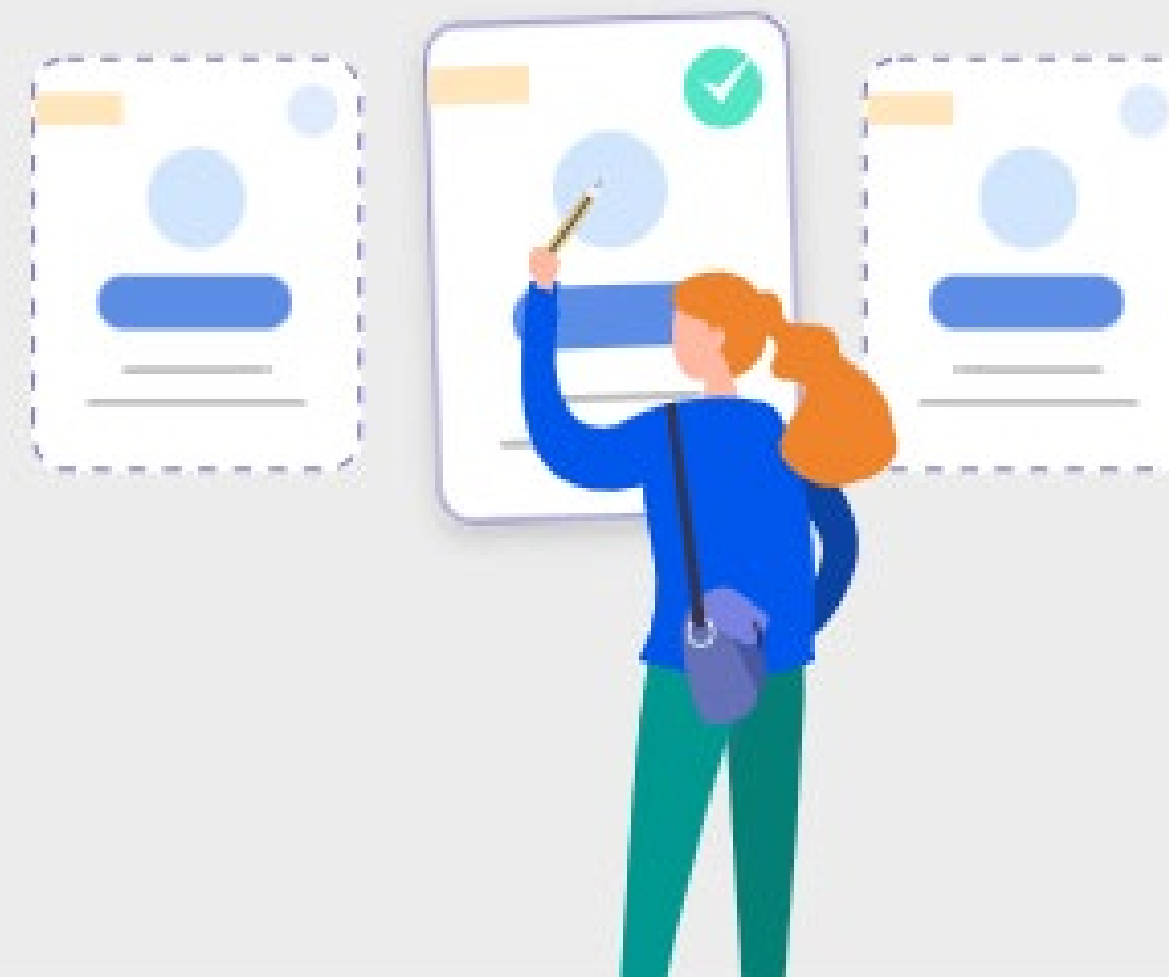
Use Cases



Students can find college options by filtering on important criteria, such as location and financial aid



Families can use the multi-year tuition calculator and net price calculator tools to make a budget for going to college



School counselors can create a list of colleges that offer specific academic programs based on a student's interests

Statistics Included

Cost

Total tuition and fees

Average cost of living

Total and average financial aid

Average cost after financial aid

Student characteristics

Total enrollment, disaggregated by student characteristics

Retention and graduation rates, disaggregated by student characteristics

Costs, financial aid, retention, and graduation rates for veterans

Consumer information

Number of degrees awarded by major each year

Number of students in varsity athletic programs*

Number of on-campus crimes for past three years*

Loan default rates for past three years*

Data Sources

Data Sources

Integrated Postsecondary Education Data System (IPEDS)

Office of Postsecondary Education (OPE)

Federal Student Aid (FSA)



Quality Control

Edits within the Data Collection System

Compare data to prior years of data

Compare data to expected high and low values

Check values across survey components

Post-collection follow up with institutions

Review of missing and outlier data

Review of text-based responses

Feedback and training for institutions

Data Feedback Reports sent to data providers and to institutional CEOs

Training on public uses of IPEDS data

Training on benchmarking



Name of School

States (use map for more than 1 state)

- No Preference
- Alabama
- Alaska
- Arizona

[Use Map](#)


ZIP Code

Miles from



Programs/Majors

0 Items Selected


[Browse for Programs](#)

Level of Award ?

- Certificate
- Bachelor's
- Associate's
- Advanced

Institution Type ?

- Public
- Private non-profit
- Private for-profit
- 4-year
- 2-year
- < 2-year

+ MORE SEARCH OPTIONS

Show Results
[Guide Me](#) | [Clear Search](#)

Montgomery College

51 Mannakee Street, Rockville, Maryland 20850



General information: (240) 567-5000
Website: www.montgomerycollege.edu/
Type: 2-year, Public
Awards offered: Less than one year certificate
 One but less than two years certificate
 Associate's degree

Campus setting: City: Small
Campus housing: No
Student population: 17,137 (all undergraduate)
Student-to-faculty ratio: 16 to 1



IPEDS ID: 163426
 OPE ID: 00691100

[Expand All](#) | [Collapse All](#)

- + GENERAL INFORMATION
- + TUITION, FEES, AND ESTIMATED STUDENT EXPENSES
- + FINANCIAL AID
- + NET PRICE
- + ENROLLMENT
- + ADMISSIONS
- + RETENTION AND GRADUATION RATES
- + OUTCOME MEASURES
- + PROGRAMS/MAJORS

Map and Program Search Features

MAP SELECTOR: Select one or more states by clicking on the map or regions close

Far West Rocky Mountains Southwest Plains
 Southeast Great Lakes Midwest New England

OTHER JURISDICTIONS

American Samoa | Federated States of Micronesia | Guam | Marshall Islands | Northern Marianas | Palau | Puerto Rico | Virgin Islands

PROGRAMS/MAJORS SELECTOR close

Your Selections

Only find schools that offer these selections as Distance Education
 Only find schools that offer ALL these selections

How to Use the Programs/Majors Selector

1. Find the program/major you are interested in by typing a keyword into the text field below, or
2. Click **+** to drill down from the general categories, then
3. Click **+add** to place into Your Selections and **-remove** to delete an item. Multiple selections will return schools with any of the programs added, unless the **ALL these selections** checkbox is ticked.
4. Click the Distance Education checkbox if you are searching only for schools that offer your selections as distance education. If you select a general category, results will include schools with at least one of the category's programs/majors

Programs/Majors Search | [Reset List](#)

- + Agricultural/Animal/Plant/Veterinary Science and Related Fields (91)**
- + Architecture and Related Services (20)**
- + Area, Ethnic, Cultural, Gender, and Group Studies (50)**
- + Biological and Biomedical Sciences (92)**
- + Business, Management, Marketing, and Related Support Services (106)**
- + Communication, Journalism, and Related Programs (27)**
- + Communications Technologies/Technicians and Support Services (16)**
- + Computer and Information Sciences and Support Services (35)**
- + Construction Trades (26)**
- + Culinary, Entertainment, and Personal Services (33)**
- + Education (109)**
- + Engineering (60)**

Demonstration

Next Steps

NPEC Research

Work with the National Postsecondary Education Cooperative (NPEC) to identify future improvements to the College Navigator based on commissioner research

User Experience Research

User experience research planned for all IPEDS data tools to help:

Identify audiences

Streamline tools